

ASTERISM PLEIADES

The Pleiades is an Open Cluster in the constellation Taurus.

This cluster is also known as the Seven Sisters or Messier 45.

The cluster contains hundreds of stars, of which only a handful are commonly visible to the unaided eye.

The stars in the Pleiades are thought to have formed together around 100 million years ago, making them 1/50th the age of our sun, and they lie some 425 light years away.

The Pleiades were the seven daughters of Atlas and Pleione.

They are represented by the stars Pleione, Atlas, Alcyone, Merope, Electra, Celaeno, Taygeta, Asterope and Maia.

Asterism - An asterism is a distinctive pattern of stars or a distinctive group of stars in the sky.

Open Cluster - A loose aggregation of dozens or hundreds of young stars, in a volume of space typically less than 50 light-years across, that is only weakly held together by gravity and is fated to disperse over a period of several hundred million years.

Constellation - A grouping of stars that make an imaginary picture in the sky.
There are 88 constellations.

THE STARS



THE OBJECTS NEARBY




THE LOCATION FROM THE PLEIADES IN THE CONSTELLATION TAURUS



THE MAIN-THEMES IN ASTERISM PLEIADES

PLEIADES



Musical notation for the main theme of Pleiades. It is written in treble clef with a 6/8 time signature. The melody consists of eight notes: a dotted quarter note G4, an eighth note A4 with a sharp sign, a dotted quarter note B4, an eighth note C5 with a sharp sign, a dotted quarter note D5, an eighth note E5, a dotted quarter note F5, and an eighth note G5. The notes are aligned with the lyrics below.

P l e i a d e s


PLEIONE



Musical notation for the main theme of Pleione. It is written in treble clef with a 6/8 time signature. The melody consists of seven notes: a dotted quarter note G4, an eighth note A4 with a sharp sign, a dotted quarter note B4, an eighth note C5 with a sharp sign, a dotted quarter note D5, an eighth note E5, and a dotted quarter note F5. The notes are aligned with the lyrics below.

P l e i o n e

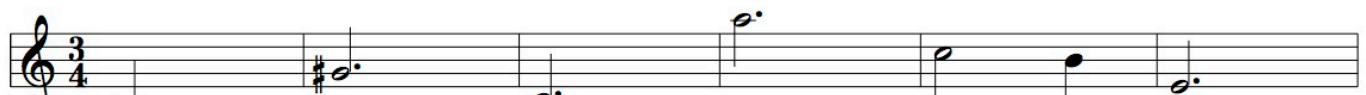
ATLAS



Musical notation for the main theme of Atlas. It is written in treble clef with a 5/8 time signature. The melody consists of five notes: a dotted quarter note G4, an eighth note A4 with a flat sign, a dotted quarter note B4 with a sharp sign, an eighth note C5, a dotted quarter note D5, and an eighth note E5. The notes are aligned with the lyrics below.

A t l a s

ALCYONE



Musical notation for the main theme of Alcyone. It is written in treble clef with a 3/4 time signature. The melody consists of six notes: a dotted quarter note G4, an eighth note A4 with a sharp sign, a dotted quarter note B4, an eighth note C5, a dotted quarter note D5, and an eighth note E5. The notes are aligned with the lyrics below.

A l c y o n e

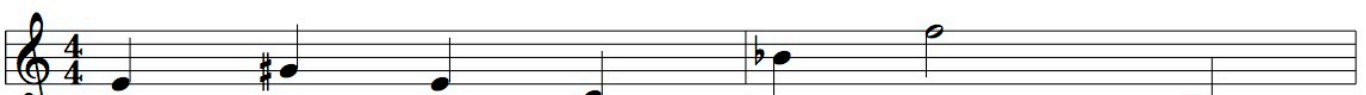
MEROPE



Musical notation for the main theme of Merope. It is written in treble clef with a 4/4 time signature. The melody consists of seven notes: a dotted quarter note G4, an eighth note A4, a dotted quarter note B4, an eighth note C5, a dotted quarter note D5, an eighth note E5, and a dotted quarter note F5. The notes are aligned with the lyrics below.

M e r o p e


ELECTRA



Musical notation for the main theme of Electra. It is written in treble clef with a 4/4 time signature. The melody consists of seven notes: a dotted quarter note G4, an eighth note A4 with a sharp sign, a dotted quarter note B4, an eighth note C5, a dotted quarter note D5, an eighth note E5, and a dotted quarter note F5. The notes are aligned with the lyrics below.

E l e c t r a

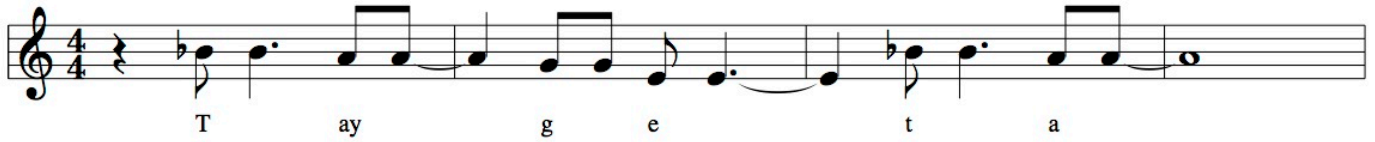
GELAENO



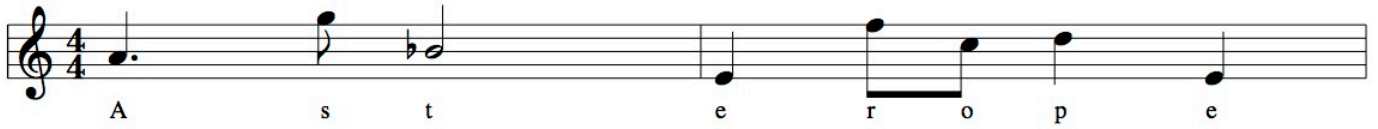
Musical notation for the main theme of Gelaeno. It is written in treble clef with a 3/4 time signature. The melody consists of seven notes: a dotted quarter note G4, an eighth note A4, a dotted quarter note B4, an eighth note C5 with a sharp sign, a dotted quarter note D5, an eighth note E5, and a dotted quarter note F5. The notes are aligned with the lyrics below.

C e l a e n o

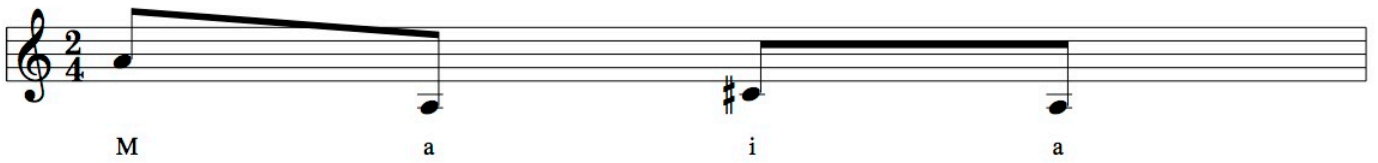
TAYGETA



ASTEROPE



MAIA



THE MOTIVES IN ASTERISM PLEIADES

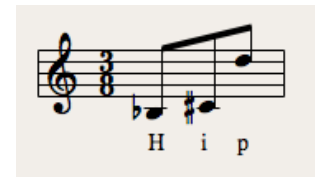
TAURI

A BAYER / FLAMSTEED INDICATION



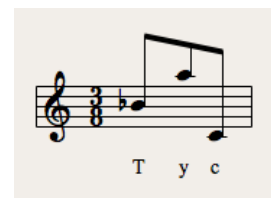
HIP

THE HIPPARCOS AND TYCHO CATALOGUES (VOL. 1-17)



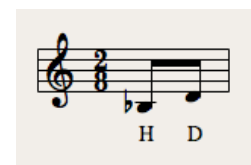
TYC

TYCHO MISSION
THE HIPPARCOS AND TYCHO CATALOGUES (VOL. 1-17)



HD

HENRY DRAPER CATALOGUE



CED

CEDERBLAD - STUDIES OF BRIGHT DIFFUSE GALACTIC NEBULAE WITH SPECIAL REGARD TO THEIR SPATIAL DISTRIBUTION.



VDB

VAN DEN BERGH - STARS IN REFLECTION NEBULAE.



MEL

MELOTTE - A CATALOGUE OF STAR CLUSTERS SHOWN ON THE FRANKLIN-ADAMS CHART PLATES



C

CLUSTER



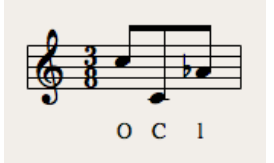
H

NUEVAS NEBULOSAS PLANETARIAS Y OBJETOS CON EMISION EN LA REGION DEL CENTRO GALACTICO



OCL

CATALOG OF STAR CLUSTERS AND ASSOCIATIONS



M

MESSIER - CATALOGUE DES NEBULEUSES ET DES AMAS D'ÉTOILES



THEMES USED IN PLEIADES

- PLEIADES
- M45
- SEVEN SISTERS
- SUBARU
- MELOTTE 22
- C 0344+239
- H 0346+24
- OCL 421.0

THEMES USED IN PLEIONE

PLEIONE
HIP 17851
BU TAURI
28 TAURI
TYC 1800-2200-1
HD 23862
CED 19P

THEMES USED IN ATLAS

ATLAS
CED 19D
HD 23850
TYC 1800-2203-1
27 TAURI
HIP 17847

THEMES USED IN ALCYONE

ALCYONE
HIP 17702
ETA TAURI
25 TAURI
TYC 1800-2202-1
HD 23620
VDB 23

THEMES USED IN MEROPE

MEROPE
HIP 17608
23 TAURI
TYC 1800-2204-1
HD 23480
VDB 22
CED 19I

THEMES USED IN ELECTRA

ELECTRA
HIP 17499
17 TAURI
TYC 1799-1441-1
HD 23302
VDB 20

THEMES USED IN CELAENO

CELAENO
HIP 17489
16 TAURI
TYC 1799-1440-1
HD 23288
CED 19C

THEMES USED IN TAYGETA

TAYGETA
HIP 17531
19 TAURI
HD 23324
CED 19E

THEMES USED IN ASTEROPE

ASTEROPE
HIP 17579
21 TAURI
TYC 1803-1584-1
HD 23432
CED 19H

THEMES USED IN MAIA

MAIA
HIP 17573
20 TAURI
TYC 1799-1439-1
HD 23408
VDB 21